

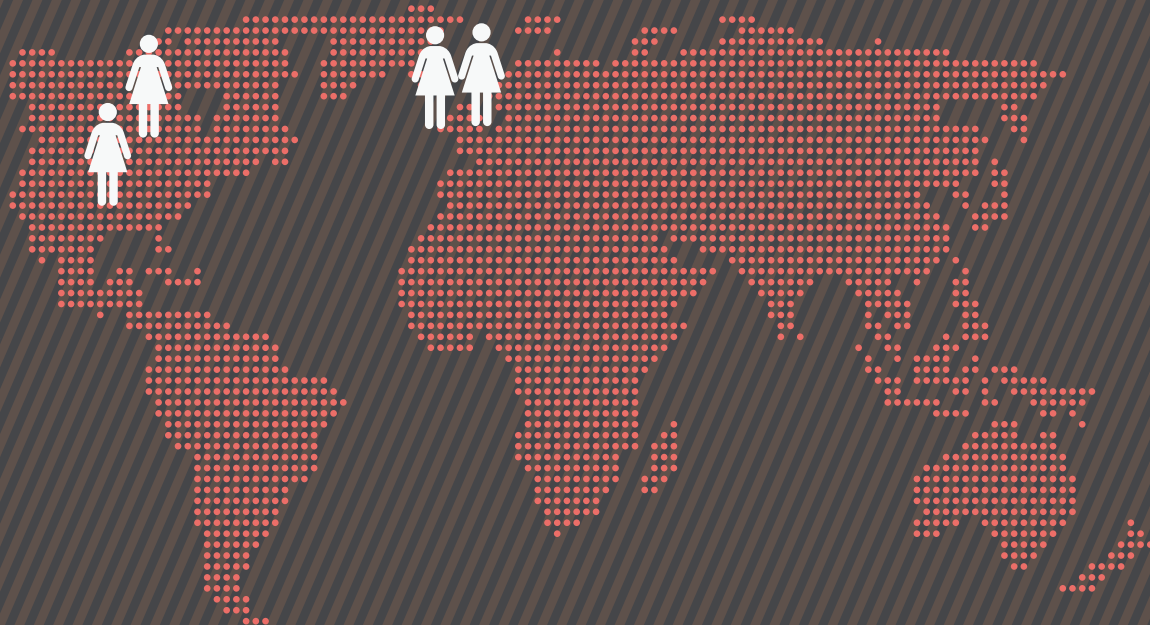
726 total number of RRHOF inductees

65 total number of women inductees

8.95% percentage of women

Where they are from:

- 60 United States
- 2 England
- 2 Sweden
- 1 Canada



How is eligibility gauged?

Artists become eligible for induction 25 years after the release of their first record.

WOMEN IN THE ROCK AND ROLL HALL OF FAME

1 THE 1980'S

1986	0	1987	1
1988	3	1989	1

5 TOTAL FOR DECADE

MISSING IN ACTION

Vivian Carter,

an African-American radio DJ, founded Vee-Jay records (with her husband James C. Bracken). This small independent label quickly grew to become one of the leading labels dealing with R&B, blues and some pop music (RRHOF inductees Jerry Butler, The Dells, The Four Seasons, John Lee Hooker) and was the first American distributor of a then little-known band called The Beatles.

First year of Eligibility: 1986 (first year the award was created)
Category: Ahmet Ertegun Award, formerly the Non-Performer category

Florence Ballard
Diana Ross
Mary Wilson
1988 Performer
(The Supremes)

• FIRST WOMAN IN RRHOF •
Aretha Franklin
1987 Performer

Bessie Smith
1989
Early influence

Criteria include: the influence and significance of the artists' contributions to the development and perpetuation of rock and roll.



1990

Performer

Zola Taylor (The Platters)

Non-Performer

Carole King (with Gerry Goffin)

Early Influence

Ma Rainey

1991

Performer

Laverne Baker

1993

Performer

Ruth Brown

Etta James

Cynthia Robinson • Rosie Stone (Sly & the Family Stone)

Early Influence

Dinah Washington

1994

Performer

Donna Jean Godchaux (Grateful Dead)

1995

Performer

Janis Joplin

Rosalind Ashford • Annette Beard • Betty Kelly • Lois Reeves • Martha Reeves • Sandra Tilley (Martha and the Vandellas)

1996

Performer

Gladys Knight (Gladys Knight & the Pips)

Shirley Alston Reeves • Addie Harris • Doris Kenner-Jackson • Beverly Lee (The Shirelles)

Maureen Tucker (The Velvet Underground) • Grace Slick (The Jefferson Airplane)

1997

Performer

Joni Mitchell

Early Influence

Mahalia Jackson

1998

Performer

Stevie Nicks • Christine McVie (Fleetwood Mac)

Cass Elliot • Michelle Phillips (The Mamas & the Papas)

1999

Performer

Dusty Springfield

Mavis Staples • Cleotha Staples • Yvonne Staples (The Staple Singers)

661

total number of RRHOF "Songs That Shaped Rock & Roll"

111

total number of songs by women or groups with women members

16.79%

percentage of women represented

Year	Count	Year	Count	TOTAL FOR DECADE
1990	3	1991	2	35
1992	0	1993	5	
1994	1	1995	7	
1996	7	1997	2	
1998	4	1999	4	

WOMEN IN THE ROCK AND ROLL HALL OF FAME

2 THE 1990'S

MISSING IN ACTION

Linda Creed (with Thom Bell),

was a songwriter of some of the biggest R&B hits of the 1970's. She is notably absent from the Non-Performer category. The careers of the Stylistics, The Spinners, Harold Melvin and Blue Notes and even Whitney Houston were all made with Creed's songs. Many of her songs have been performed by numerous RRHOF inductees, including Diana Ross, Marvin Gaye, Prince, Hall and Oats, Tina Turner, Rod Stewart and Smokey Robinson & the Miracles. She passed away from cancer in 1986 at the age of 37.

First year of Eligibility: 1995
Category: Ahmet Ertegun Award, formerly the Non-Performer category

65 total number of women in the RRHOF

38 total number of African-American women in the RRHOF

58.4% percentage of African-American women in the RRHOF

TOTAL FOR DECADE

1 2

2000	2	2001	0
2002	2	2003	0
2004	0	2005	1
2006	1	2007	4
2008	1	2009	1

2000 Performer Bonnie Raitt
Early Influence Billie Holiday

2002 Performer Brenda Lee
Tina Weymouth (Talking Heads)

2005 Performer Chrissie Hynde (The Pretenders)

2006 Performer Debbie Harry (Blondie)

2007 Performer Estelle Bennett • Ronnie Spector • Nedra Talley (The Ronettes)
Patti Smith

2008 Performer Madonna

2009 Early Influence Wanda Jackson

The "Sidemen" category has been just that. Only one woman has been inducted into this category. Notably absent is Carol Kaye, most associated with the Wrecking Crew, a group of Los Angeles in-demand session musicians. She has played bass guitar or guitar on a reported 10,000 recording sessions, including music for RRHOF inductees The Beach Boys, The Doors, Phil Spector, Herb Alpert, Frank Zappa, the Buffalo Springfield and Ray Charles, just to name a few.

First year of Eligibility: 2000
(first year the award was created)
Category: Rock and Roll Hall of Fame Award for Musical Excellence, formerly the Sidemen category

MISSING IN ACTION
Carol Kaye

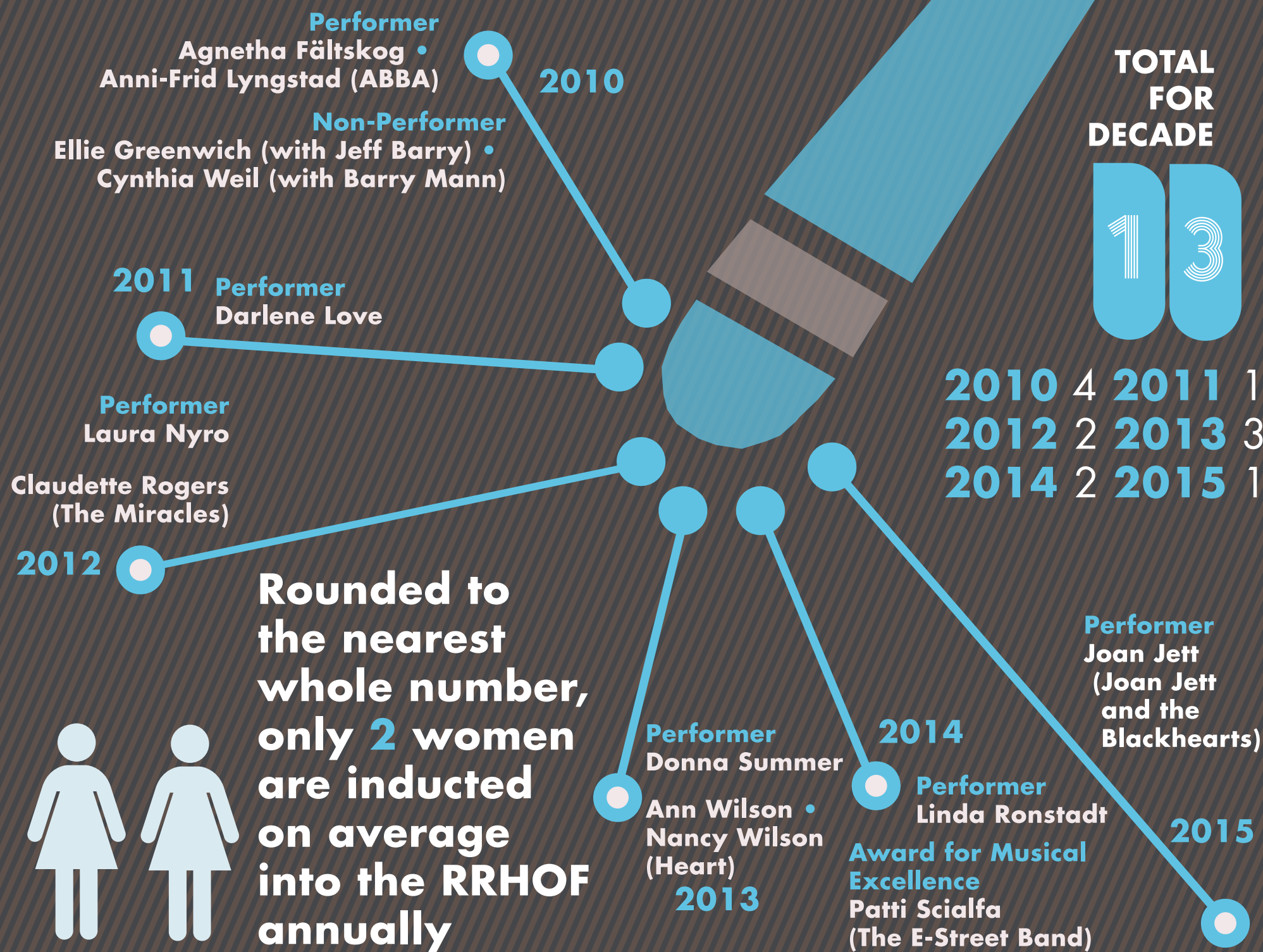
3 THE 2000'S

WOMEN IN THE ROCK AND ROLL HALL OF FAME

WOMEN IN THE ROCK AND ROLL HALL OF FAME

© 2014 Ben Brown Jr.
<http://www.aceofspadespdx.com>
 As always, thank you Travis and Gypsy

4 THE 2010'S



Susan Rogers,

is a true rarity among women in any part of the music industry: she is an audio engineer, and has worked most notably with RRHOF inductees Prince, Queen and David Byrne on many albums, including the Oscar- and Grammy-winning Purple Rain soundtrack. (She counts among her other clients India.Arie, Patti Labelle, Barenaked Ladies and Laurie Anderson.) She currently is an Associate Professor in the Music Production and Engineering department at the Berklee College of Music.

First year of Eligibility: 2009
 Category: Ahmet Ertegun Award, formerly the Non-Performer category

59 number of women inductees that have been primarily vocalists

1 number of vocalists that also play the trumpet professionally

3 number of vocalists that also play the keyboards professionally

7 number of vocalists that also play the guitar or bass professionally